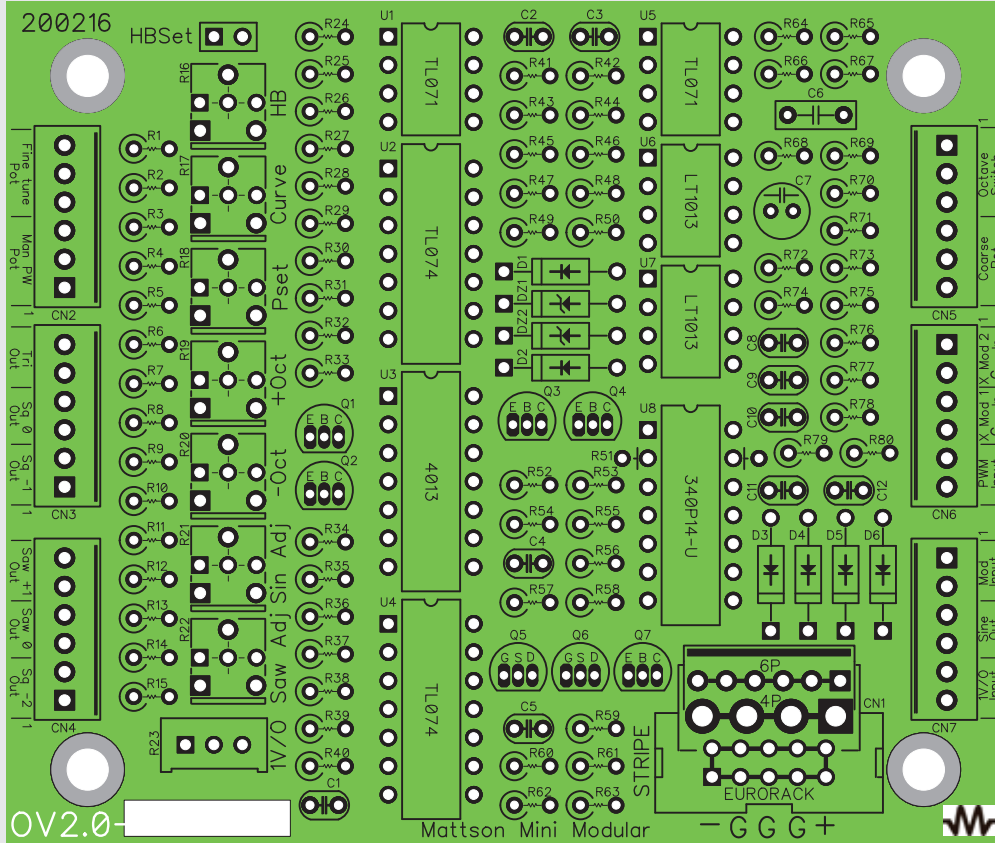


Mattson VCO 2 DIY Board assembly

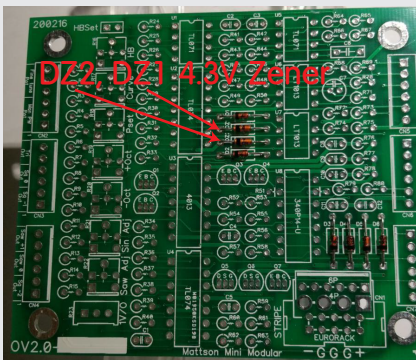
Page 1

I hereby swear that I have read and understand the Mattson Builders notes before starting this awesome project.



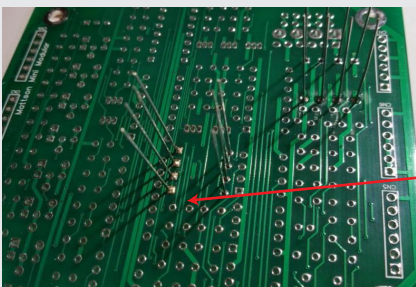
Refer to this graphic for parts placement

Diodes



Note that diodes are directional devices and the striped band on one end of the diode has to be matched with the stripe on the diode graphic on the board.

Insert diodes **D1-D6** -1N914 Or 1N4148. Then, locate the two 4.3V Zener diodes **DZ1 and DZ2** - TZX4V3B and insert them into the board.



Once all of the diodes are placed in the proper locations in the proper orientation, solder them to the board.

I like to solder one side of each and check to make sure they're against the board. Then, solder the opposite leads.

Clip the excess leads when all of the leads are soldered.